

Röchling Waldachtal

Industrial Technology – Extrusion



Extrusion

Röchling Medical Waldachtal AG (formerly FRANK plastic AG) combines the broad experience in plastics and the various processing technologies within the Röchling Group with the advantages of an agile medium-sized company at one location.

Extruded tubes and profiles for industrial applications have been manufactured here for more than fifty years.

- 16 single-screw extrusion lines
- 1 extrusion line in application technology for material and product development
- Machine sizes from 45–90 extruder
- Mono- and co-extrusion
- Meter weights from 1–4,350 g/m
- Haul-off speeds up to 50 m/min
- Profile lengths from 10–7,500 mm
- Chipping and Chipless cutting technology
- Tension-free winding on spools and coils

Materials

- PE/PP
- PS/ABS/ASA
- PVC-U/PVC-P
- PC
- PA
- PVDF
- PET
- TPE

Inline Processing

- Punching
- Boring
- Milling
- Sticking
- Insertion
- Foiling
- Printing

Offline Processing

- Assembling
- Gluing
- Welding
- Machining

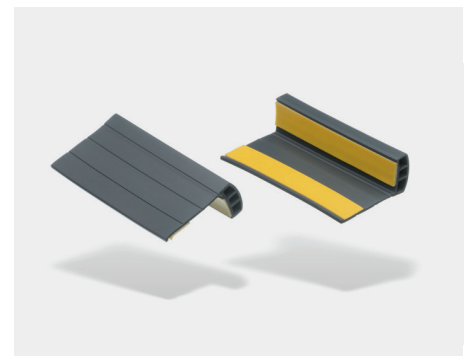
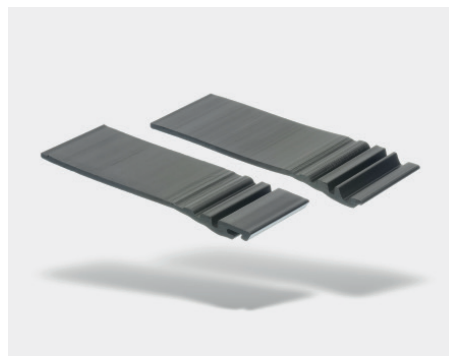
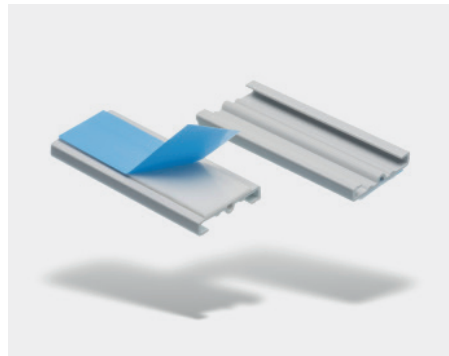
Your Contact for Extruded Products

Markus Posneike

Key Account Manager

T +49 7486 181-280 | M +49 162 25 44 496

MPosneike@roechling.com



Röchling Medical Waldachtal AG
Herbert-Frank-Str. 26
72178 Waldachtal-Salzstetten | Germany
T +49 7486 181-0
Info.Waldachtal@roechling.com

Röchling Medical. Passion for Health.
www.roechling.com/waldachtal

