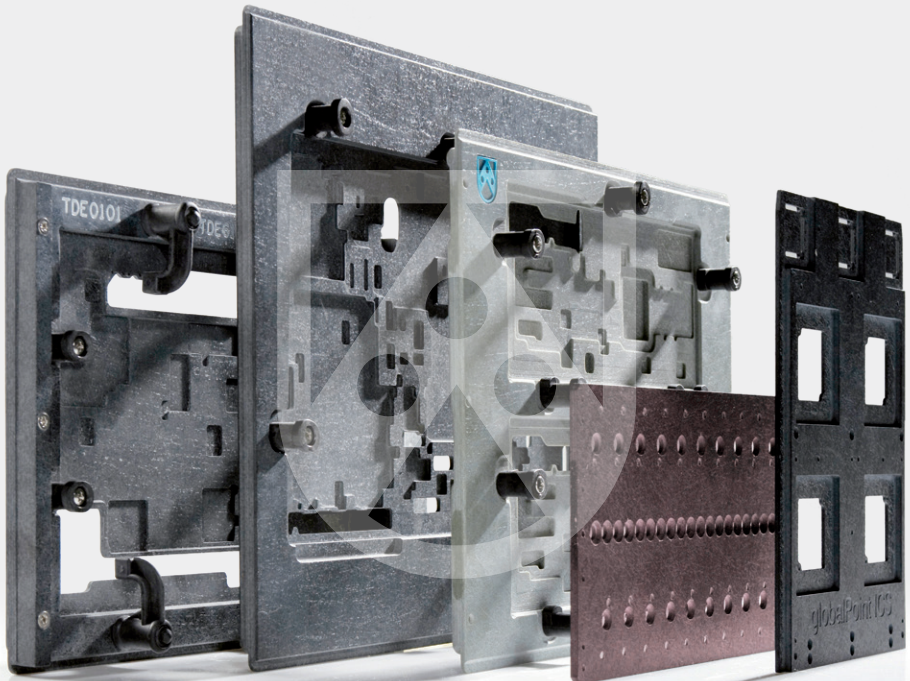


Durostone®

PCB Solder Pallet Materials

High performance composite materials specifically designed for the PCB assembly process

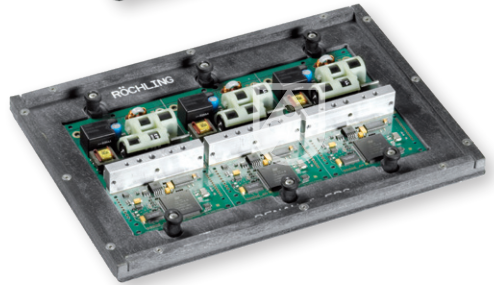
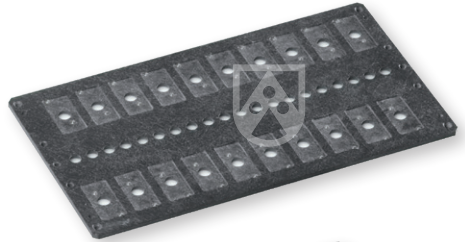


PCB Solder Pallet Materials



Durostone® materials have been developed for all procedures within the PCB assembly process. There are three main grades which are suitable for use in the SMT reflow and wave soldering processes, **Durostone® CHP760, CAS761 and CAG762**. These materials offer the following features:

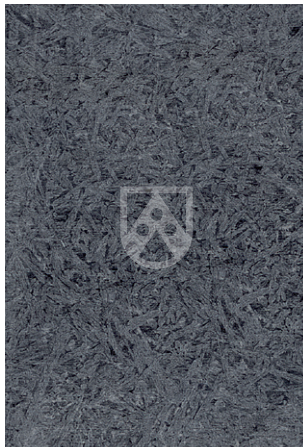
- Excellent mechanical properties at elevated temperatures in both the wave soldering and SMT reflow processes.
- Low thermal conductivity.
- Excellent machining properties enabling the manufacture of complex design solder pallets.
- Good resistance to chemicals used in modern fluxes.



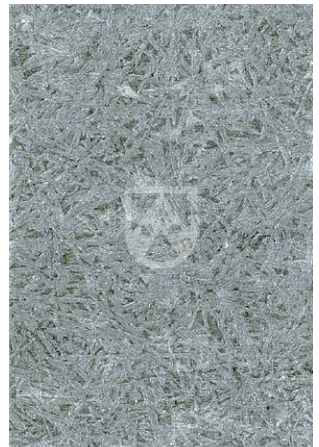
CHP760



CAS761



CAG762



Harsh environments

In the wave soldering process, a combination of flux, temperature and process cycle time can result in a reduced lifespan of standard solder pallet materials.

The solution is **Durostone® WGR781**, a woven glass laminate which has been specifically formulated to withstand extreme temperatures and aggressive fluxes.

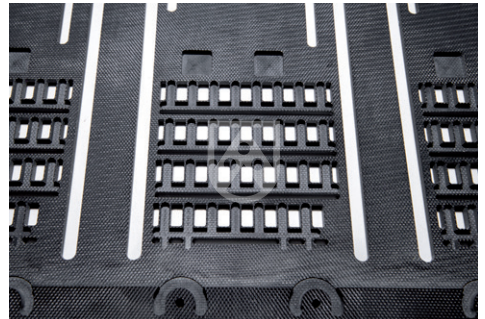
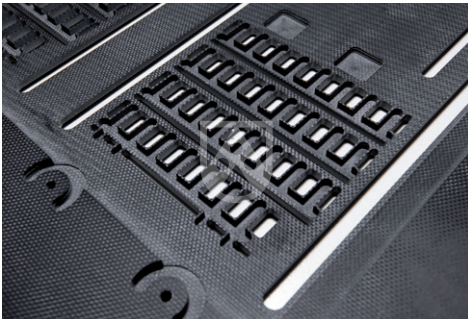
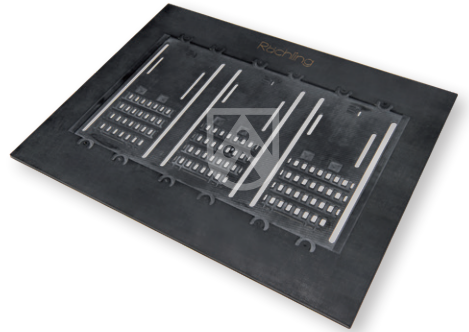
Fluxes containing halides or halogen activators can reduce a material's lifespan but Durostone® WGR781 is designed for a very high cycle repetition. The woven glass reinforcement ensures that the flux does not penetrate the solder pallet surface and expose fibres.

The resin used to produce Durostone® WGR781 can operate at a continuous temperature of 280 °C. The material also displays excellent mechanical properties and provides the necessary dimensional stability at elevated temperatures in the wave soldering process.

Due to the improved material properties, the use of titanium inserts can often be eliminated, depending on the application conditions.

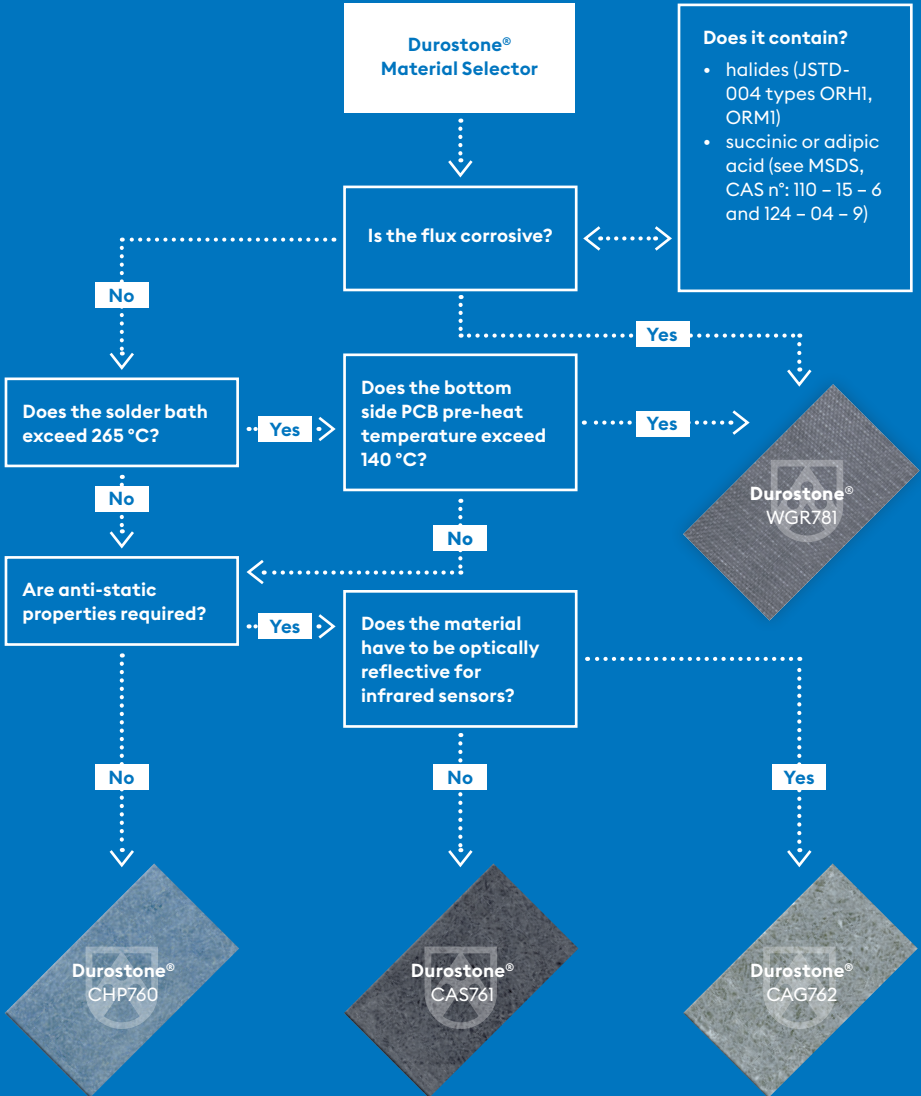
Durostone® WGR781 has excellent machining properties, with thin wall thicknesses possible.

WGR781



Material Selector

The following flow chart enables the correct choice of material grade depending on the process parameters.



Technical Data

		CHP760	CAS761	CAG762	WGR781
Grade		Standard	Anti-Static	Anti-Static Optical	Flux Resistant
Colour		Blue	Black	Grey	Black
Glass reinforcement		Glass mat	Glass mat	Glass mat	Woven glass
Density (g/cm ³)		1.85	1.85	1.85	1.85
Flexural Strength 3 point support (MPa)	@ 23 °C	360	360	360	400
	@ 150 °C	180	180	180	300
	@ 185 °C	-	-	-	-
Modulus of Elasticity (MPa)	@ 23 °C	18,000	18,000	18,000	26,000
	@ 150 °C	9,000	9,000	9,000	24,000
	@ 185 °C	-	-	-	-
Water Absorption (%)		< 0.20	< 0.20	< 0.20	< 0.10
Coefficient of Linear Expansion (10 ⁻⁶ /K) between 30 °C and 200 °C		13	11	11	13
Thermal Conductivity (W/m ² K)		0.25	0.25	0.25	0.30
Maximum Operating Temperature (°C) 10 – 20 seconds		300	300	300	320
Standard Operating Temperature (°C)		260	260	260	280
Surface Resistivity (ohms)		10 ¹²	10 ⁵ – 10 ⁹	10 ⁵ – 10 ⁹	10 ⁵ – 10 ⁹
Chemical Resistance		Good	Good	Good	Excellent
Sheet Size (mm)		2,440 x 1,220	2,440 x 1,220	2,440 x 1,220	2,500 x 1,220
Thickness' available (mm)		3, 4, 5, 6, 8, 10, 12	3, 4, 5, 6, 8, 10, 12	3, 4, 5, 6, 8, 10, 12	5, 6, 8, 10*
Thickness Tolerance	3 mm	-0/+0.10	-0/+0.10	-0/+0.10	-
	4 – 12 mm	-0/+0.20	-0/+0.20	-0/+0.20	-0/+0.20
Flatness Tolerance (for a panel size of 300 x 300 mm)		0.20	0.20	0.20	0.20
Parallelism (mm)		0.10	0.10	0.10	0.10

- All the values are average values.
- Material is considered as not electrostatic dissipative (ESD) if more than 5 measurements / m² are insulative (10¹² Ω). According to JEDEC standard JESD625B, a static dissipative material is a material having a surface resistance between 10⁴ and 10¹¹ Ω.
- Cosmetic defects are not considered as non-conformities. Due to the nature of glass fiber composite, the colour repartition is not guaranteed.
- * Other sizes available on request.

Europe

GERMANY

Röchling Lützen SE & Co. KG

Planckstr. 3
06686 Lützen
T +49 34 444 308-200
F +49 34 444 308-100
kontakt@roebling-luetzen.de
www.roebling-industrial.com/
luetzen

FRANCE

Röchling Industrial Nancy S.A.S.

8, Rue André Fruchard
B.P.12, Maxéville
54527 LAXOU Cedex
T +33 383 342424
F +33 383 322318
info@roebling-permal.fr
www.roebling-industrial.com/fr

GREAT BRITAIN

Röchling Industrial (UK) Ltd. –

Gloucester
Waterwells Drive | Quedgeley
Gloucester GL2 2AA
T +44 1452 72-7900
F +44 1452 72-8056
sales@roebling-plastics.co.uk
www.roebling-industrial.com/uk/
gloucester

ITALY

Röchling Machined Plastics

Italia s.r.l
Via Morena 66
28024 Gozzano
T +39 0322 95421
F +39 039 93335
compositi@roebling.it
www.roebling-industrial.com/it

SPAIN

Röchling Plásticos Técnicos

S.A.U.
Ctra. Villena, s/n. - Apartado 34
46880 Bocairent
T +34 962 350 165
F +34 962 351 025
comercial@roebling-plastics.es
www.roebling-industrial.com/es

North America

USA

Röchling Machined Plastics

161 Westec Drive
15666 Mount Pleasant PA
T +1 724 696-5200
F +1 724 696-5300
rmp@roebling.biz
www.roebling-industrial.com/us

Asia

CHINA

Roebling International (Shanghai) Co., Ltd.

No. 448 Chang Yang Street
Suzhou Industrial Park
215024 Suzhou
T +86 512 6265 2899
F +86 512 6265 2699
ris@roebling-plastics.com.cn
www.roebling-industrial.com/cn

INDIA

Roebling Engineering Plastics (India) Pvt. Ltd.

701, A Wing, Leo Building
24th Road, Khar West
400 052 Mumbai
T +91 224217 8787
F +91 224217 8700
durostone@roebling-india.com
www.roebling-industrial.com/india

SINGAPORE

Roebling Engineering Plastics Pte. Ltd.

No. 14 Tuas Avenue 8
Singapore 639229
T +65 6863 1877
F +65 6863 1766
rep@roebling.com.sg
www.roebling-industrial.com/sg/
singapore